



5 TON

COLD BLOCKER

# WORKWEAR

2025

# BLOCKER FRANCHISE



## **COLD BLOCKER**®

Cold Blocker provides reliable protection against bitter conditions. Wind protection, water resistance, and multiple insulation options keep warmth in and the elements out, making it ideal for cold weather work.

Cold Blocker: Insulation: 40-100 Grams

Cold Blocker Plus: Insulation: 100+ Grams



## **SOLAR BLOCKER**®

Solar Blocker is designed to protect against sun exposure ranging from UPF 30+ to UPF 50+ rating. Breathable, moisture-wicking fabrics manage heat and moisture to keep the body cool and dry, ensuring comfort in hot environments.

Solar Blocker: UPF 30+

Solar Blocker Plus: UPF 50+



## **STORM BLOCKER**®

Storm Blocker delivers dependable protection against extreme weather with water repellency and wind resistance. Seam-sealed construction keeps rain out, while the windproof design locks in warmth. Insulation options add warmth without bulk.

Storm Blocker: Wind & water resistant

Storm Blocker Plus: Windproof & waterproof

# TECH FEATURE



### ANTI ODOR

Prevents odor-causing bacteria, keeping you feeling fresh all day



### BREATHABLE

Allows airflow to keep you cool and comfortable



### COOLING

Temperature regulating body temperature during activity



### MOISTURE CONTROL

Wicks and expels moisture to maintain a dry level of comfort



### QUICK DRY

Rapidly dries perspiration and moisture to keep you comfortable and dry



### RECYCLED MATERIAL

Made from recycled materials to reduce environmental impact



### REFLECTIVE

Increased visibility in low-light conditions to enhance safety



### S3 CORD MANAGEMENT

Built-in drawcord management to keep loose ends safely stowed



### SEAM TAPED

Seam-taped construction keeps out wind and water



### SNAG FREE

Built to prevent snags, ensuring durability



### STRETCH

Fabrics engineered with flexibility for enhanced mobility



### ULTRAVIOLET PROTECTION

Protects against harmful UV rays with UPF rated sun protection



### WATER RESISTANT

Shields against moisture, providing protection from mild weather



### WATER REPELLENT

Repels water to keep you dry and comfortable



### WATERPROOF

Made with seam-sealed construction to keep you dry in blustery conditions



### WIND RESISTANT

Provides protection from breezy conditions, ensuring comfort in mild winds



### WINDPROOF

Blocks out wind ensuring warmth and comfort in windiest conditions.



COOLMAX® Fast Drying, Moisture-Wicking Technology to Keep you Cool and Dry.



Cordura® Highly Wear Resistant and Friction Resistant Fabric for Added Durability.



CORE Icon and Hex Bullets designate CORE Product by Style and Color.



## WORKWEAR

---

POSITIONED AT THE INTERSECTION OF  
FUNCTIONAL DESIGN AND DURABILITY.

---

Our focus on design and durability is what sets us apart and fuels a fierce loyalty with customers. Our customer depends on us to deliver quality garments season after season and we honor their work, by doing our own.

We blend a 100+ years of heritage into state-of-the-art technology, developing performance rich fabrics, sourcing new textiles —all while listening directly to customer feedback. Our commitment to the ever-changing demands of today's jobsites is something we take seriously, we meet trade specific needs without sacrificing safety, comfort or style.

**PRO SERIES**  
**OUTERWEAR**  
**BOTTOMS**  
**TOPS**  
**CAPS**

---



INTRODUCING  
**PRO SERIES**  
FROM CAT® WORKWEAR

# The Future of Workwear.

## PREMIUM MATERIALS

Crafted with advanced technical fabrics for enhanced durability, moisture control, and temperature regulation.

## ALL-WEATHER PERFORMANCE

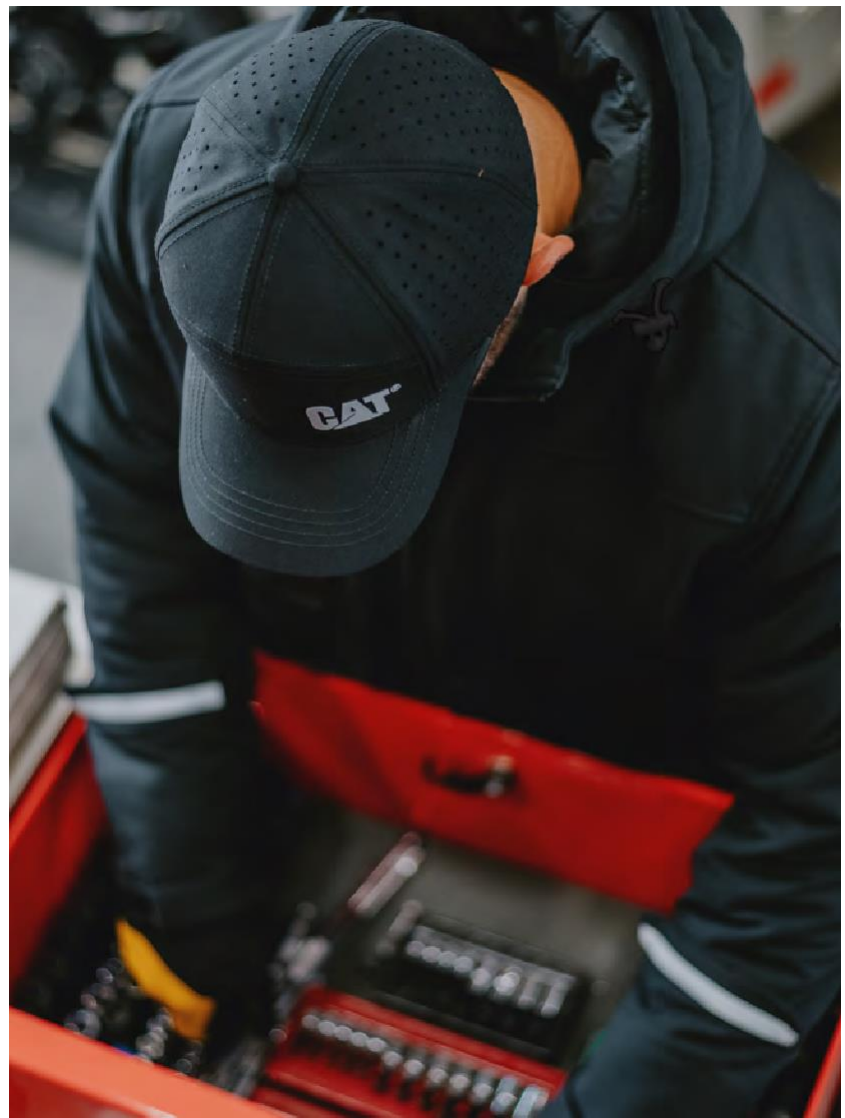
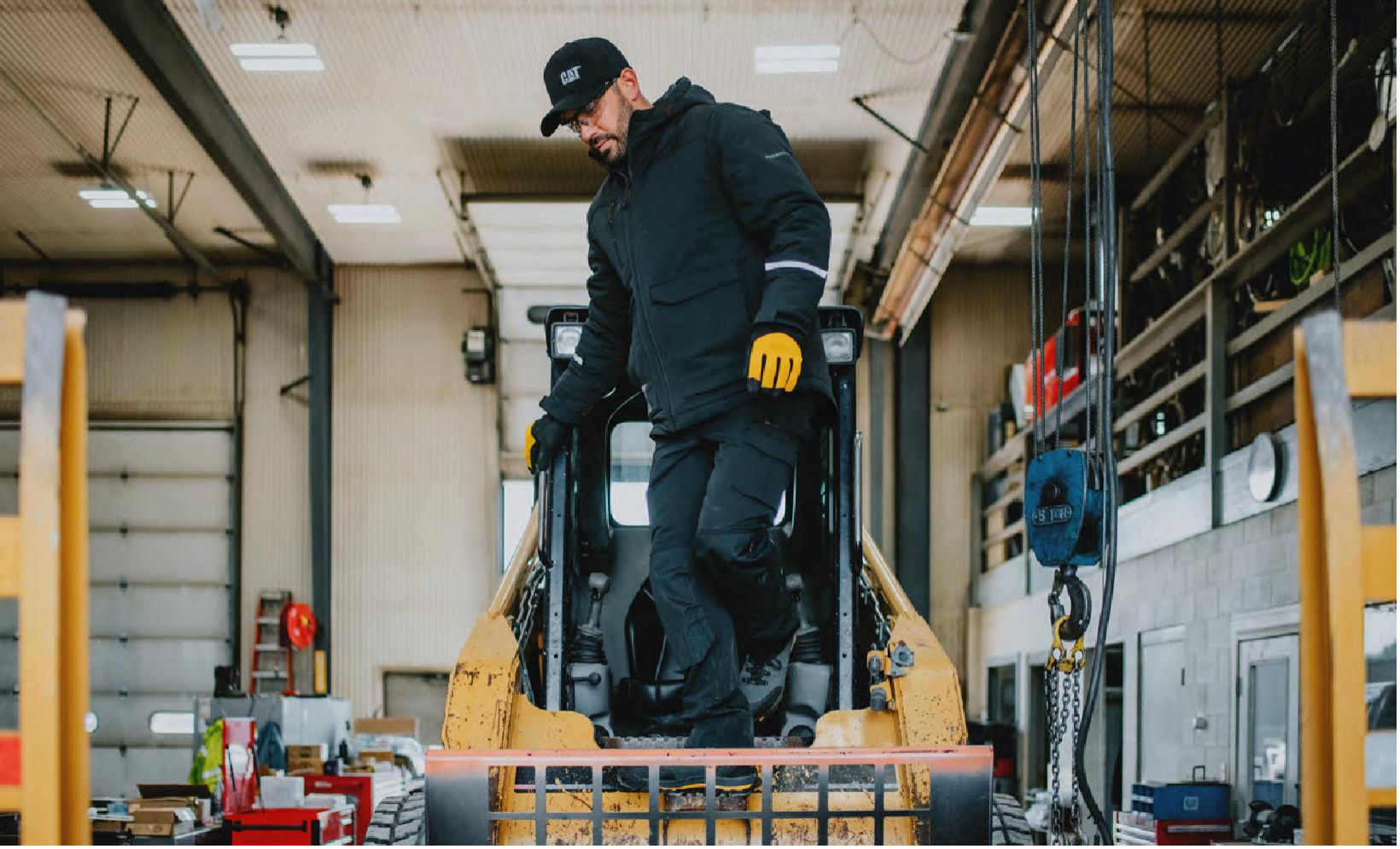
Flexible layering system with practical features designed for comfort and function in any environment.



CAT

5 TON

COLD BLOCKER+



**COLD BLOCKER**®

NEW

**STORM BLOCKER**®

NEW



DURABLE RIPSTOP FABRICATION

FLEECE BACKED HYBRID SLEEVE



## CAT PRO SERIES INSULATED JACKET

1040059-10158

## CAT PRO SERIES SOFTSHELL JACKET

1040060-10158



### **COLD BLOCKER**®

Cold Blocker provides reliable protection against bitter conditions. Wind protection, water resistance, and multiple insulation options keep warmth in and the elements out, making it ideal for cold weather work.

Cold Blocker: Insulation: 40-100 Grams

Cold Blocker Plus: Insulation: 100+ Grams

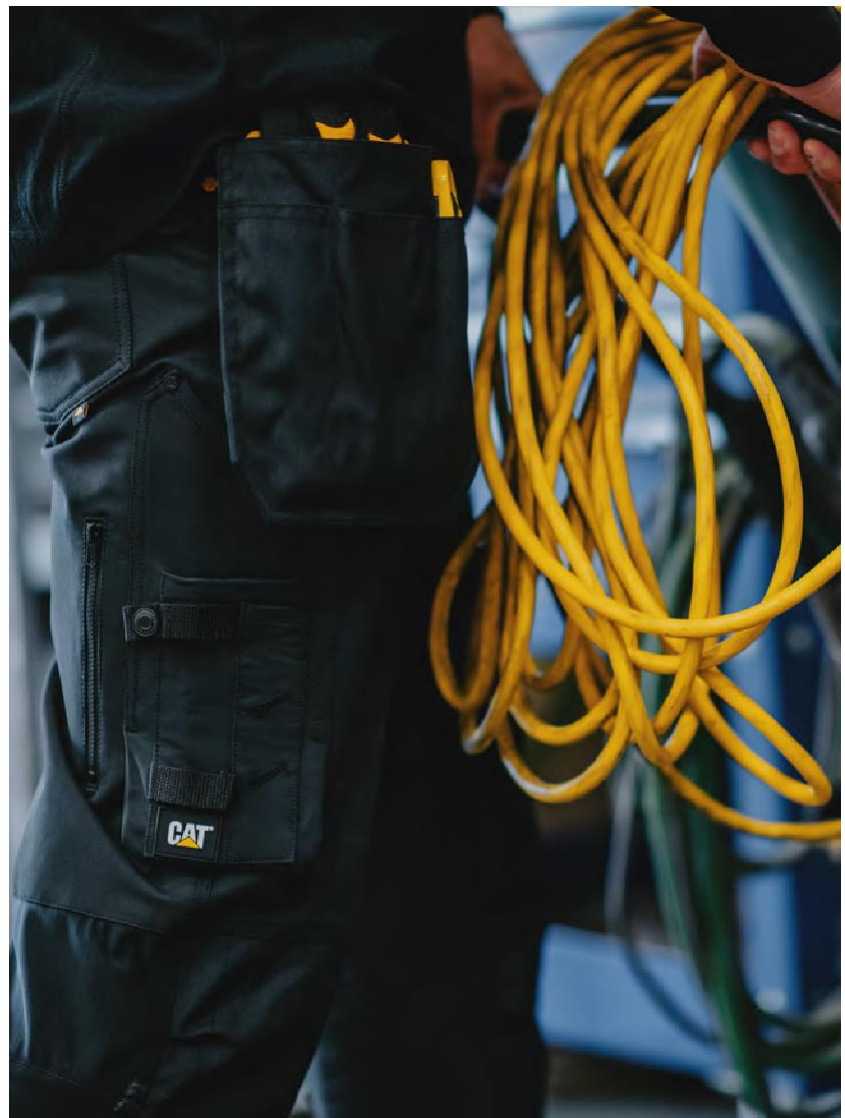


### **STORM BLOCKER**®

Storm Blocker delivers dependable protection against extreme weather with water repellency and wind resistance. Seam-sealed construction keeps rain out, while the windproof design locks in warmth. Insulation options add warmth without bulk.

Storm Blocker: Wind & water resistant

Storm Blocker Plus: Windproof & waterproof





NEW

NEW



BREATHABLE, MOISTURE WICKING  
MERINO WOOL BLEND



BREATHABLE, MOISTURE WICKING  
MERINO WOOL BLEND

### CAT PRO SERIES S/S WOOL BLEND TEE

1010236

### CAT PRO SERIES L/S WOOL BLEND TEE

1010237

NEW

CORDURA  
CORDURA®

NEW



TEMPERATURE REGULATING MESH LINED HOOD  
SECURE ZIP POCKETS  
PFC FREE DWR FOR WATER RESISTENCY



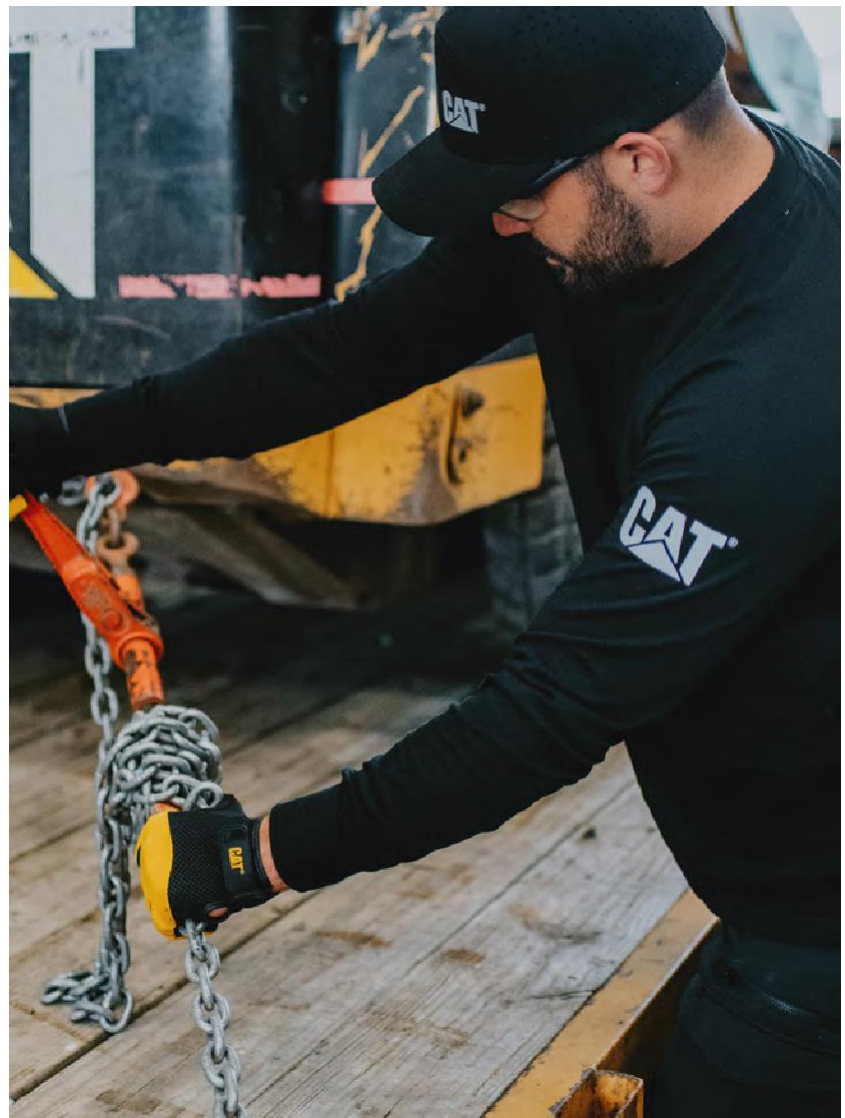
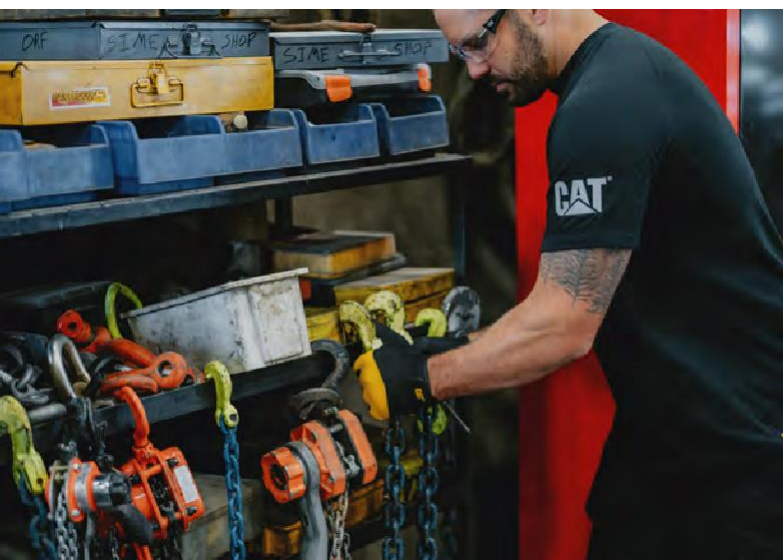
ARTICULATED BOTTOM LOADING CORDURA®  
KNEE PAD POCKETS  
CORDURA® REINFORCED LEG OPENING  
BREATHABLE ANTI-FATIGUE POWER MESH™  
ON BACK OF KNEES

### CAT PRO SERIES PULL OVER HOODIE

1050034

### CAT PRO SERIES TROUSER

1080069





**OUTERWEAR**



Carmenere - 12559  
NEW COLOR

1030010

CAT MICROFLEECE QUARTER ZIP

FEATURES

- Embroidered Oxford Logo Patch at Left Chest
- Interior Storm Fly with Chin Guard
- Tagless Back Neck
- Quarter Zip Front Closure

FABRIC

Microfleece, 100% Polyester with Anti-Pill Treatment, 5.9oz (200GSM)

FIT Slim Fit



Black-Yellow - 12469



Chive - 12369

1310149

## ESSENTIAL FZ FLEECE

### FEATURES

- Interior Storm Flap with Chin Guard
- Left Chest Zip Closure Pocket
- Lower Reach-in Pockets with Zip Closure
- Logo Label on Left Bicep

### FABRIC

Polar Fleece, 100% Polyester with Anti-Pill Treatment, 7.7oz (260GSM)



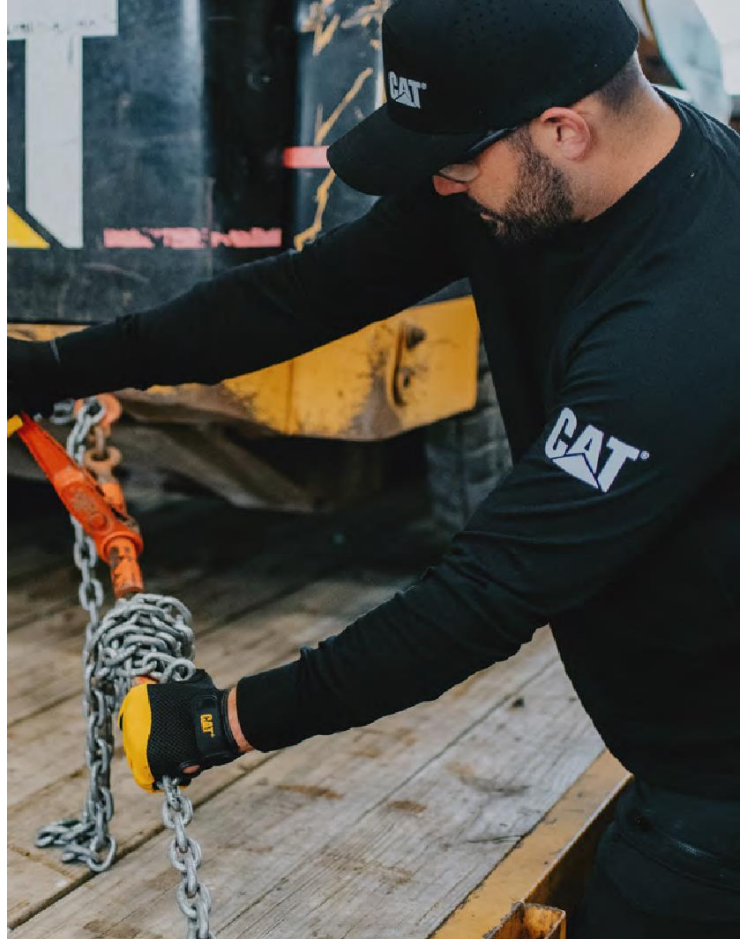
Black - 10158

### FIT Slim Fit

XS	S	M	L	XL	2XL	3XL	4XL
■	■	■	■	■	■	■	■



Army Moss - 10030



1320059

ESSENTIAL BODYWARMER



Dark Shadow - 40100



Black - 10158

FEATURES

- Durable Nylon Shell That Holds Up on Any Job Site
- Interior Storm Flap with Chin Guard
- Left Chest Zip Closure Pocket
- Adjustable Cord Locks at Hem
- Front Pouch Pockets with Zip Closure
- Interior Chest Pocket with Hook & Loop Closure
- Logo Label on Left Hip

FABRIC

Ripstop, 100% Nylon, 1.8oz (60GSM)  
 Lining: Taffeta, 100% Polyester, 210T  
 Insulation: Polyfill, 100% Recycled Polyester, 5.9oz (200GSM)

**COLD BLOCKER<sup>®</sup>**



- INSULATED
- WATER RESISTANT
- RECYCLED INSULATION
- WIND RESISTANT

FIT Slim Fit



W12430

ARCTIC ZONE VEST



Army Moss-Black - 13723



Black - 016



Bronze-Navy - 13872



Navy - 382

FEATURES

- Water Resistant Quilted Material Keeps You Covered from Work to Home
- Lower Pockets with Logo Zip Closure
- Adjustable Hem with Elasticord and Cordlocks
- Interior Storm Flap with Chin Guard
- Heavy Duty Locker Loop at Back Neck
- Two Interior Zip Closure Chest Pockets
- Two Interior Drop-in Mesh Pockets
- Logo Label at Left Chest
- Updated Construction on This Best Seller for Added Durability

FABRIC

Micro Peach, 100% Polyester with Acrylic PU Laminate, 3.4oz (115GSM)/ 200mm Waterproof,  
 Lining: Taffeta, 100% Polyester, 240T / Insulation: Recycled Synthetic Down, 600FP

**COLD BLOCKER<sup>®</sup>**



- BREATHABLE
- WATER RESISTANT
- RECYCLED INSULATION
- WIND RESISTANT

FIT Regular Fit





**PRO SERIES**

1040059

NEW

**CAT PRO SERIES INSULATED JACKET**



Black - 10158



Back

**FEATURES**

- Insulated and Quilted Body on Front and Back for Warmth
- Ripstop Fabrication for Added Durability
- Front Handwarmer Pockets with Zippered Chest Pocket for Secure Storage
- Full Front Zippered Opening with Chin Guard at Neck Opening
- Hybrid Sleeve Materials with Fleece Backing
- Reflective Back Logo Print on Bottom Hem
- Reflective Logo Triangle Print at Center Back
- Adjustable Sleeve Cuffs
- Hidden Cell Phone Pocket
- Adjustable Bottom Hem with Elastic Cord for Protection from the Elements

**FABRIC**

Body: Ripstop Pongee, 100% Polyester with TPU Laminate, 3oz (101GSM) / Sleeves: Woven Face with Knitted Back Fleece, 95% Polyester, 5% Spandex, 9.44oz (320GSM) / Taffeta, 100% Polyester 210T / Insulation, 100% Recycled Polyester, Body: 4.4oz (150 GSM), Sleeves: 1.2oz (40 GSM)

**COLD BLOCKER®**



RECYCLED INSULATION

STRETCH

REFLECTIVE

WATER REPELLENT

WIND RESISTANT

FIT Regular Fit





Black-Yellow - 12469



Black - 10158

1040029

## TECH HYBRID JACKET

### FEATURES

- Hybrid Fabric Combination Provides Lightweight, Breathable Warmth with Added Stretch for Mobility
- Center Front Zip Closure with Logo Zipper Pull
- Interior Full Length Storm Flap
- Two Lower Pockets with Secure Zip Closure and Logo Zipper Pulls
- Adjustable 3-Piece Hood with Elasticcord and Cordlocks
- Adjustable Hem with Elasticcord and Cordlocks
- Interior Chest Pocket with Secure Hook & Loop Closure
- Two Lower Interior Drop-in Pockets with Secure Hook & Loop Closure
- Reflective Logo Print at Left Chest
- Cold Blocker Logo at Left Bicep
- Reflective Print at Back Cuffs

### FABRIC

Double Needle Ripstop, 92% Nylon, 8% Spandex with TPU Laminate, 5.3oz (178GSM) / 5000mm Waterproof, 5000GSM Breathable / Contrast Sleeves: Softshell, 96% Polyester, 4% Spandex, Bonded to 100% Polyester Microfleece, 310GSM / 5000mm Waterproof, 800GSM Breathable / Lining: Taffeta, 100% Polyester, 210T / Insulation: Polyfill, 100% Recycled Polyester, 3.5oz (120GSM)

**COLD BLOCKER.**



- |                     |                 |
|---------------------|-----------------|
| INSULATED           | STRETCH         |
| REFLECTIVE          | WATER REPELLENT |
| RECYCLED INSULATION | WIND RESISTANT  |

FIT Regular Fit



W11440

## SOFT SHELL JACKET

### FEATURES

- Stretch Softshell Material for Comfort and Protection from the Elements
- Interior Storm Flap with Chin Guard
- Left Chest Zip Closure Pocket
- Lower Reach-in Zip Closure Pockets
- Ampit Zip Vents
- Articulated Elbows with Nylon Overlays
- Reflective Piping at Yoke and Sleeve Seams
- Adjustable Logo Rubber Cuff Tabs with Hook & Loop Closure
- Adjustable Hem with Elasticcord and Cordlocks
- Logo Label at Left Chest and Center Back Yoke

### FABRIC

Softshell, 98% Polyester 8% Spandex Bonded to Microfleece, 9.73oz (330GSM) / 5000mm Waterproof, 800GSM Breathable,

**STORM BLOCKER.**

- |            |                 |
|------------|-----------------|
| BREATHABLE | WATER REPELLENT |
| STRETCH    | WIND RESISTANT  |
| REFLECTIVE |                 |

FIT Regular Fit



Black - 016



Back





Black - 016



Graphite - 061

W11432

## HEAVY INSULATED PARKA

### FEATURES

- 2-Way Front Zip Closure
- Hidden Zip Closure Pocket Under Storm Flap
- Two Chest Pockets with Snap Flap Closure
- Additional Layered Chest Pockets with Zip Closure
- Lower Pockets with Snap Flap Closure and Side Entry Handwarmer Pockets Lined with Microfleece
- Sleeve Pocket with Snap Flap Closure and Additional Layered Pocket with Zip Closure
- Adjustable Cuffs with Snap Tabs and Hidden Storm Cuffs
- Zip-Off Adjustable Hood Lined with Microfleece
- Adjustable Drawcord at Waist and Hem
- Two Interior Zip Closure Chest Pockets
- Interior Cell Phone Pocket with Hook & Loop Flap Closure
- Logo Label on Left Chest Pocket and Sleeve Pocket

### FABRIC

Oxford, 100% Polyester with DWR Coating, 6.0oz (200GSM) / Lining: Taffeta, 100% Polyester, 190T  
Insulation: Polyfill, 100% Recycled Polyester, 6.0oz (200GSM)

**COLD BLOCKER.**



- RECYCLED INSULATION
- REFLECTIVE

- WATER RESISTANT
- WIND RESISTANT

FIT Regular Fit



1040046

## RIPSTOP SOFTSHELL JACKET

### FEATURES

- Three Layer Ripstop Softshell Material Engineered to Withstand the Elements
- Interior Storm Fly That Extends to Front Chin Guard
- Three Exterior Welt Pockets with Logo Zipper Pulls and Secure Zip Closure
- Adjustable Cuffs with Hook & Loop Tab
- Raglan Set Sleeves for Additional Range of Motion
- Logo Label on Wearer's Left Bicep and Center Back Collar
- Logo Zipper Pull at Center Front Zip Closure and Pockets

### FABRIC

3-Layer Ripstop Softshell, 100% Polyester, Polar Fleece Backing, 8.2oz (278GSM) / 3000mm  
Waterproof, 3000GSM Breathable



Amy Moss-Black - 13723



Black-Black - 12195

**STORM BLOCKER.**

- BREATHABLE
- WATER REPELLENT
- WIND RESISTANT

FIT Regular Fit



**PRO SERIES**



Black - 10158



Back

1040060

NEW

**CAT PRO SERIES SOFTSHELL JACKET**

**FEATURES**

- Stretch Water Repellent Softshell Fabrication
- Full Front Zip Opening with Chin Guard at Neck Opening
- Stretch Back Panel for Freedom of Movement
- Multiple Zippered Pockets for Secure Storage
- 3-Piece Adjustable Hood with Added Center Back Adjustment for Better Protection from the Elements
- Adjustable Sleeve Cuffs
- Small Bill on Front of the Hood to Repel Water
- Microfleece Interior
- Logo Print on Back Right Shoulder

**FABRIC**

Softshell, 100% Polyester, 8.55oz (290GSM)

**STORM BLOCKER®**

- |            |                 |
|------------|-----------------|
| BREATHABLE | WATER REPELLENT |
| STRETCH    | WIND RESISTANT  |
| REFLECTIVE |                 |

FIT Regular Fit



1310152

**ESSENTIAL SOFTSHELL JACKET**

**FEATURES**

- Stretch Softshell Material for Comfort and Protection from the Elements
- Interior Storm Flap with Chin Guard
- Adjustable Cuffs with Tab Closure
- Left Chest Zip Closure Pocket
- Lower Reach-in Pockets with Zip Closure
- Interior Pocket with Hook & Loop Closure
- Logo Label on Left Bicep

**FABRIC**

Softshell, 94% Polyester, 6% Spandex with TPU Laminate and Fleece Backing, 9.7oz (330GSM) / 8000mm Waterproof, 3400GSM Breathable

**STORM BLOCKER®**

- |            |                 |
|------------|-----------------|
| BREATHABLE | WATER REPELLENT |
| STRETCH    | WIND RESISTANT  |

FIT Regular Fit



Black - 10158



Navy - 10564



Army Moss - 10639



Dark Shadow - 40100



# BOTTOMS

1810038



## OPERATOR FLEX TROUSER



Back

Dark Sand - 10244

### FEATURES

- Stretch Twill Fabrication
- Logo Label at Back Right Waistband
- Front Slash Pockets with Logo Metal Rivet
- Additional Front Slash Pocket with Logo Zip Closure
- Belloved Side Cargo Pocket with Secure Flap Closure and Layered Multipurpose Pockets
- Stretch Panels Inset at Waist and Back of Knee
- Stretch Crotch Gusset

### FABRIC

Stretch Twill, 60% Cotton, 38% Polyester, 2% Spandex, 7.4oz (250GSM) / Rib Inserts: 9% Polyester, 3% Spandex, 8.6oz (300GSM)

- STRETCH
- UPF 50+

FIT Regular Fit, Straight Leg with 17in (43cm) Leg Opening

	28	30	32	34	36	38	40	42
INSEAM	■	■	■	■	■	■	■	■
	■	■	■	■	■	■	■	■
	■	■	■	■	■	■	■	■

1080054

## TECH PRO TROUSER



Dark Shadow - 40100

### FEATURES

- Durable and Comfortable 4-Way Stretch Material Throughout
- Cordura® Reinforced Knee Pad Pockets with Articulated Knee Overlays
- Reflective Piping at Back Knees
- Cargo Pocket with Secure Flap Closure and Layered Multipurpose Pockets
- Front Slash Pockets with Logo Metal Rivets
- Back Right Tool Pocket
- Diamond Shaped 4-Way Stretch Crotch Gusset
- Hammer Loop on Right Hip
- Cordura® Reinforced Scuff Guards at Hem
- Logo Label on Left Cargo Pocket and Center Back Belt Loop

### FABRIC

4-Way Stretch Twill, 65% Cotton, 33% Polyester, 2% Elastane with PFC-Free DWR Coating, 7.4oz (250GSM) / Contrast 1: 4-Way Stretch Woven, 93% Polyester, 7% Spandex, 7.1oz (240GSM) / Contrast 2: 100% Cordura® Nylon Oxford, 6.8oz (230GSM)



- BREATHABLE
- 4-WAY STRETCH
- REFLECTIVE
- UPF 50+
- WATER RESISTANT
- PFC
- CW91 KNEE PADS  
Certified EN14484 Protection when Used with Articulated Knee Pad Pockets

FIT Slim Fit, Straight Leg with 16in (41cm) Leg Opening

	28	30	32	34	36	38	40	42
INSEAM	30	■	■	■	■	■	■	■
		■	■	■	■	■	■	■
		■	■	■	■	■	■	■

PRO SERIES

1080069

NEW

# CAT PRO SERIES TROUSER



Back

Black - 10158

### FEATURES

- 4-Way Stretch Fabrication Throughout
- Cordura Knee Pad Pockets with Added Articulation for Freedom of Movement
- Cordura Overlays at Leg Opening for Added Abrasion Resistance
- Power Mesh Inserts in Back of Knee to Fight Fatigue
- Multiple Utility Pockets That Keep You Covered on The Job Site and Off
- Sewn Eyelets in Crotch Gusset for Added Breathability
- Silicone Logo Print Gripper on Interior Waistband
- Silicone Logo D-Ring for Small Accessories
- Small Zip Pocket on Right with Standard 5-Pocket Construction
- Added Reflective for Visibility
- Logo Labels on Tool Pocket and Back Center Belt Loop

### FABRIC

4-Way Stretch Woven, 92% Polyester, 8% Spandex, 9.3oz (315GSM)



4-WAY STRETCH



REFLECTIVE



BREATHABLE



UPF 50+

CE EN14404 CW91 KNEE PADS  
Certified EN14404 Protection when Used  
with Articulated Knee Pad Pockets



FIT Regular Fit, Straight Leg with 17in (43 cm) Leg Opening

	28	30	32	34	36	38	40	42
INSEAM	■	■	■	■	■	■	■	■
	■	■	■	■	■	■	■	■
	■	■	■	■	■	■	■	■



BOTTOMS



**TOPS**

1620023

## ESSENTIAL POLO

### FEATURES

- Durable Pique Material with Full Needle Rib Knit Collar
- Rib Cuffs
- Three Button Placket
- Side Seam Vents
- Tagless Back Neck
- Logo Label at Left Sleeve Hem

### FABRIC

Pique, 100% Cotton, 5.9oz (200GSM)



Light Heather Grey - 10831

### FIT Slim Fit

XS	S	M	L	XL	2XL	3XL	4XL
■	■	■	■	■	■	■	■



Black - 10158



Dark Heather Grey - 10123



White - 10110



Navy - 10564

TOPS



1510425



## UPF HOODED BANNER L/S TEE



Blue Fog Heather - 12572

### FEATURES

- Sun Blocking Comfortable Cotton Jersey Fabrication
- Moisture Wicking Treatment for Added Comfort in Hot Climates
- Left Chest and Right Sleeve Logo Graphic
- Adjustable Hood with Drawcord
- Tagless Back Neck
- Solar Blocker Logo at Left Sleeve

### FABRIC

Solid Jersey, 100% Cotton, UPF 50, 4.7oz (160GSM) / Heather Jersey, 60% Cotton, 40% Polyester, UPF 50, 4.7oz (160GSM)

### **SOLAR BLOCKER<sup>+</sup>**



BREATHABLE



MOISTURE CONTROL



UPF 50+

FIT Regular Fit

XS	M	XL	2XL	3XL	4XL
■	■	■	■	■	■



Marshland Heather - 11063



○ Peyote - 13036



○ Black - 016



○ Dark Shadow-Black - 10934



TOPS



PRO SERIES

1010236

NEW

CAT PRO SERIES S/S WOOL BLEND TEE



Black - 10158

FEATURES

- Merino Wool Blend Material for Superior Comfort
- Flatlock Stitching on Body to Prevent Chafing or Irritation
- Side Panels for Mobility
- Logo Graphic Print on Left Bicep
- Reflective Logo Triangle on Bottom Hem

FABRIC

Wool Blend Jersey, 90% Cotton, 10% Merino Wool, 5.9oz (200GSM)

BREATHABLE

MOISTURE CONTROL

REFLECTIVE

FIT Regular Fit



PRO SERIES

1010237

NEW

CAT PRO SERIES L/S WOOL BLEND TEE



Black - 10158

FEATURES

- Merino Wool Blend Material for Superior Comfort
- Flatlock Stitching on Body to Prevent Chafing or Irritation
- Side Panels for Mobility
- Rib Cuffs at Sleeve Opening
- Logo Graphic Print on Left Bicep
- Reflective Logo Triangle on Bottom Hem

FABRIC

Wool Blend Jersey, 90% Cotton, 10% Merino Wool, 5.9oz (200GSM)

BREATHABLE

MOISTURE CONTROL

REFLECTIVE

FIT Regular Fit



TOPS



W05324

# TRADEMARK TEE

### FEATURES

- Our Traditional Ringspun Cotton Jersey for Durability and Comfort
- Left Chest and Center Back Logo Graphic
- Logo Label on Left Sleeve Hem
- Tagless Back Neck

### FABRIC

Solid Jersey, 100% Ringspun Cotton, 5.9oz (200GSM) / Heather Jersey, 60% Ringspun Cotton, 40% Polyester, 5.9oz (200GSM)



Back



Real Teal Heather - 13084

### FIT Regular Fit

XS	M	XL	2XL	3XL	4XL
■	■	■	■	■	■



Navy Heather - 13180



Bio Lime Heather - 13958  
REFLECTIVE



Blue Fog Heather - 12572



Khaki - 10401



Heather Grey - 001



Night Camo - 11790



Black - 016



Dark Heather Grey - 004



Chive - 12369



Mustard Yellow Heather - 13130

TOPS

1510305



## TM LOGO TEE



Bronze - 11768

### FEATURES

- Our Traditional Ringspun Cotton Jersey for Durability and Comfort
- Center Chest High Density Logo Graphic
- Logo Label on Left Sleeve Hem
- Tagless Back Neck

### FABRIC

Solid Jersey, 100% Ringspun Cotton, 5.9oz (200GSM) / Heather Jersey, 60% Ringspun Cotton, 40% Polyester, 5.9oz (200GSM)

### FIT Regular Fit

XS	M	XL	2XL	3XL	4XL
■	■	■	■	■	■



Coronet Blue - 18-3922



Mustard Yellow Heather - 13130



Iceberg Green - 16-5808



Burnt Ochre - 18-1354



Chive - 12369



Black - 016



Dark Heather Grey - 004

1510552

LOGO POCKET TEE

FEATURES

- Our Traditional Ringspun Cotton Jersey for Durability and Comfort
- Left Chest Pocket with Logo Print
- Center Back Logo Graphic Print
- Logo Label on Left Sleeve Hem
- Tagless Back Neck

FABRIC

Solid Jersey, 100% Ringspun Cotton, 5.9oz (200GSM) / Heather Jersey, 60% Ringspun Cotton, 40% Polyester, 5.9oz (200GSM)

FIT Regular Fit

XS	S	M	L	XL	2XL	3XL	4XL
■	■	■	■	■	■	■	■



Back



Black - 016



Dark Heather Grey - 004



Bronze - 11768



Brick - 11600

1010200

DIESEL POWER S/S TEE

FEATURES

- Our Traditional Ringspun Cotton Jersey for Durability and Comfort
- Updated Center Front Graphic Print
- Logo Label on Left Sleeve Hem
- Tagless Back Neck

FABRIC

Solid Jersey, 100% Ringspun Cotton, 5.9oz (200GSM) / Heather Jersey, 60% Ringspun Cotton, 40% Polyester, 5.9oz (200GSM)

FIT Regular Fit

XS	S	M	L	XL	2XL	3XL	4XL
■	■	■	■	■	■	■	■



Dark Heather Grey-Black - 13682



Black-Yellow - 12469



Black-Orange - 13090



Heather Grey-Yellow - 13091

1510034



## TRADEMARK BANNER L/S TEE

### FEATURES

- Our Traditional Ringspun Cotton Jersey for Durability and Comfort
- Left Chest and Right Sleeve Logo Graphic
- Logo Label at Left Sideseam
- Rib Knit Cuffs
- Tagless Back Neck

### FABRIC

Solid Jersey, 100% Ringspun Cotton, 5.9oz (200GSM) / Heather Jersey, 60% Ringspun Cotton, 40% Polyester, 5.9oz (200GSM)

### FIT REGULAR FIT

XS	M	XL	2XL	3XL	4XL
■	■	■	■	■	■



Red Ochre Heather - 14250  
NEW COLOR



Green Bean - 10443  
NEW COLOR



Heather Grey - 10122  
NEW COLOR



Iceberg Green - 165808  
NEW COLOR



Real Teal Heather - 13084



Yellow - 555



Detroit Blue-Hi Vis Yellow - 12895



Memphis Blue - 10960



Army-Moss-Heather - 13037



Magnet - 12669



Mustard Yellow Heather - 13130



Carmenere - 12559



Dark Heather Grey - 004



Black - 016



Night Camo - 11790



Chive - 12369



Dark Marine - 10378



Brick Heather - 12123

**PRO SERIES**



Back

1050034

NEW

**CAT PRO SERIES PULLOVER HOODIE**

**FEATURES**

- Midweight Sweatshirt Fleece Fabrication
- Adjustable 3-Piece Pullover Hood with S3 Cord Management System
- Small Extended Visor for Added Protection
- Interior Mesh Hood Liner for Temperature Regulation
- Secure Zippered Sleeve Pocket for Small Accessory Storage
- Front Kangaroo Pocket with Hidden Secure Pocket Inside
- PFC Free DWR for Water Resistance
- Rib Cuffs at Sleeve Opening
- Elastic Cord and Cord Locks at Bottom Hem for Weather Protection
- Logo Graphic Prints on Front and Back

**FABRIC**

Sweatshirt Fleece, 70% Cotton, 30% Polyester, 8.25oz (280GSM) PFC Free Exterior DWR Added for Water Resistance

- REFLECTIVE
- S3 CORD MANAGEMENT
- WATER RESISTANT **PFC FREE**

FIT Regular Fit



**H2O DEFENDER**



Black - 10158



Stormy Weather - 184214



Detroit Blue - 10118

1050036

NEW

**H2O DEFENDER PULLOVER HOODIE**

**FEATURES**

- Midweight Tech Fabrication
- Exterior PFC Free DWR Added for Water Resistance
- Center Front Chest Logo Embroidery
- Rib Knit Cuffs, Bottom Waistband, Hood Opening and Pocket Openings
- 3-Piece Adjustable Hood with S3 Cord Management
- Hidden Elastic Drawcord and Cordlock for Flexible Hood Adjustment
- Reflective Logo Triangle on Sleeve

**FABRIC**

Tech Fleece, 90% Polyester, 10% Spandex, 6.8oz (230GSM) PFC Free Exterior DWR Coating for Water Resistance

**STORM BLOCKER®**

- S3 CORD MANAGEMENT
- STRETCH
- UPF 50+
- WATER RESISTANT **PFC FREE**

FIT Regular Fit



1050024

### COLOREBLOCK RAGLAN HOODED SWEATSHIRT



Bronze-Black - 13686  
**NEW COLOR**

**FEATURES**

- Midweight Sweatshirt Fleece Fabrication
- Center Front Chest Logo Graphic Print
- Front Pouch Pocket
- Adjustable Three-Piece Hood with S3 Cord Management System
- Rib Knit Cuffs and Waistband

**FABRIC**

Midweight Sweatshirt Fleece, 70% Cotton, 30% Polyester, 8.3oz (280GSM)

S3 CORD MANAGEMENT

FIT Regular Fit



Orion Blue - 194229  
**NEW COLOR**



Barn Red/Fitch Black Heather - 14166  
**NEW COLOR**



Army Moss-Black - 13723



Black-Magnet - 13670

1050026

### MIDWEIGHT CREWNECK SWEATSHIRT



Brick Heather - 12123  
**NEW COLOR**

**FEATURES**

- Midweight Sweatshirt Fleece Fabrication
- Center Front Chest Logo Graphic Print
- Rib Knit Cuffs, Neckband, and Waistband

**FABRIC**

Midweight Sweatshirt Fleece, 70% Cotton, 30% Polyester, 8.3oz (280GSM)

FIT Regular Fit



Bronze Heather - 13252  
**NEW COLOR**



Black - 10158



Magnet - 12669

1910709



TRADEMARK BANNER HOODED SWEATSHIRT



Red Ochre - 12564  
NEWCOLOR

FEATURES

- Heavyweight Sweatshirt Fleece Fabrication
- Left Chest and Right Sleeve Logo Graphic
- Front Pouch Pocket
- Adjustable Hood with S3 Cord Management System

FABRIC

Heavyweight Sweatshirt Fleece, 70% Cotton, 30% Polyester, 10.6oz (360GSM) / Colored Heather  
Heavyweight Sweatshirt Fleece, 60% Cotton, 40% Polyester, 10.6oz (360GSM)



FIT Regular Fit

XS	M	XL	2XL	3XL	4XL
■	■	■	■	■	■

TOPS



Bronze Green - 18-0317  
NEWCOLOR



Vintage Indigo - 19-3929  
NEWCOLOR



Brick - 11600



Mallard Heather - 13542



Cream Heather - 13325



Magnet - 12669



Marshland Heather - 11063



Coffee Bean - 12355



Mustard Yellow Heather - 13130



Black - 016



Dark Heather Grey - 004



Eclipse-Hi Vis Yellow - 12966



Night Camo - 11790



W10646



# TRADEMARK HOODED SWEATSHIRT



Burnt Ochre Heather - 14111  
NEWCOLOR

### FEATURES

- Heavyweight Sweatshirt Fleece Fabrication
- Full Center Front Embroidered Logo
- Front Pouch Pocket
- Adjustable Hood with S3 Cord Management System

### FABRIC

Heavyweight Sweatshirt Fleece, 70% Cotton, 30% Polyester, 10.6oz (360GSM) / Colored Heather  
 Heavyweight Sweatshirt Fleece, 60% Cotton, 40% Polyester, 10.6oz (360GSM)

S3 CORD MANAGEMENT

### FIT REGULAR FIT

XS	M	XL	2XL	3XL	4XL
■	■	■	■	■	■



Ballad Blue - 134304  
NEWCOLOR



Army Moss Heather - 13037



Navy Heather - 13180



Camenere Heather - 12610



Bronze Heather - 13252



Black - 016



Night Camo - 11790



Cream Heather - 13325



Dark Heather Grey - 004



Black - 016

Dark Heather Grey - 004

Army Moss Heather - 13037

W10840



# FULL ZIP HOODED SWEATSHIRT

### FEATURES

- Heavyweight Sweatshirt Fleece with Lighter Weight Side Panels for Added Breathability
- Left Chest and Right Sleeve Logo Graphic
- Front Pouch Pocket
- Adjustable Hood with S3 Cord Management System

### FABRIC

Heavyweight Sweatshirt Fleece, 70% Cotton, 30% Polyester, 10.6oz (360GSM) / Colored Heather  
 Heavyweight Sweatshirt Fleece, 60% Cotton, 40% Polyester, 10.6oz (360GSM)

S3 CORD MANAGEMENT

FIT Regular Fit

XS	M	XL	2XL	3XL	4XL
■	■	■	■	■	■





**CAPS**

1090034

### CAT PATCH CAP



Chive - 12369



Black - 10158



Monument - 10305

#### TRADE

##### FEATURES

- Center Front Silicone Logo Label
- Curved Bill
- Snap Back Closure

##### FABRIC

Twill, 100% Cotton  
FIT / SIZE High Profile / OS

1090007

### CAT TRADEMARK TRUCKER HAT



Black - 10158



Heather Grey - 10122



Army Moss - 10659



Deep Woodland Camo - 15771

#### TRADE

**100% FLEXFIT**

##### FEATURES

- Embroidered Logo on Left Front Panel
- Hybrid Curve Bill
- Moisture Wicking Stretch Sweatband
- Snap Back Closure to Fit Wide Array of Sizes

##### FABRIC

Front: Twill, 78% Polyester, 2% Cotton, 3% Spandex / Back: Mesh, 68% Polyester, 5% Spandex  
FIT / SIZE Mid-Profile / OS

1090002

### RETRO DIESEL POWER CAP



Black - 10158



Yellow - 10937

#### TRADE

##### FEATURES

- Logo Embroidered Patch on Front Panels
- Hybrid Curved Bill
- Logo Label Above Back Closure
- Snap Back Closure

##### FABRIC

Front: Twill, 60% Cotton, 40% Polyester / Back: Mesh, 100% Polyester  
FIT / SIZE Mid-Profile / OS

W01700



### TRADEMARK FLEXFIT CAP



Grey - 10241



Black - 016



Night Camo - 11790

#### TRADE

**FLEXFIT**

##### FEATURES

- Embroidered Logo at Center Front
- Logo Label at Center Back
- Curved Bill
- Moisture Wicking Stretch Sweatband
- Fully Fitted

##### FABRIC

Twill, 97% Cotton, 3% Spandex  
FIT / SIZE Mid-Profile / S/M/L/XL

1120062



### RAISED LOGO CAP



Burnt Ochre - 18-1354  
NEW COLOR



Black-White - 12869



Bronze - 11768



Magnet - 12669



Black - 016



Olive - 470

#### WORK

##### FEATURES

- Embroidered Logo at Center Front
- Hybrid Curve Bill
- Snap Back Closure

##### FABRIC

Front: Twill, 100% Cotton / Back: Mesh, 100% Polyester  
FIT / SIZE Mid-Profile / OS

W01791



### TRADEMARK CAP



Bronze-Yellow - 13885  
NEW COLOR



Orion Blue - 194229  
NEW COLOR



Iceberg Green - 16-5808  
NEW COLOR



Yellow - 555



Black - 016



Night Camo - 11790

#### WORK

##### FEATURES

- Embroidered Logo at Center Front
- Curved Bill
- Adjustable Strap Back Closure with Logo Metal Buckle

##### FABRIC

Canvas, 100% Cotton  
FIT / SIZE Mid-Profile / OS



CAT LABEL CUFF BEANIE



Purple Velvet - 193725



Hi-Vs Yellow - 12130



Hi-Vis Orange - 12131



White - 10110



Bronze - 11768



Yellow-Cream - 13526



Black-Grey - 11308



Coffee Bean-Bronze - 13527



Woodland Camo - 11093



Niagara - 10956



Cream - 110103



Coffee Bean - 12355



Black - 10158



Army Moss - 10639



Detroit Blue - 10118



Dark Heather Grey - 10123



Pink - 12468

FEATURES

- Silicone Logo Label at Center Front Cuff
- Shaped Crown with Darts

FABRIC

Solid: Rib Knit, 1X1, 100% Acrylic / Heather: Rib Knit, 1X1, 50% Acrylic, 50% Polyester  
 SIZE OS

CAPS

1120117

### TRADEMARK CUFF BEANIE



Black - 016



Dark Heather Grey - 004



Pink - 12468

**FEATURES**

- Embroidered Logo on Front Cuff
- Shaped Crown with Darts

**FABRIC**

Solid: 1X1 Knit, 100% Acrylic / Heather: 1X1 Knit, 50% Acrylic, 50% Polyester  
 FIT / SIZE Classic Fit / OS

1120038

### LOGO KNIT CAP



Black - 016



Dark Heather Grey - 004

**FEATURES**

- Logo Label at Center Front
- Shaped Crown with Darts

**FABRIC**

Solid: 1X1 Rib Knit, 100% Acrylic / Heather: 1X1 Rib Knit, 50% Acrylic, 50% Polyester  
 FIT / SIZE Classic Fit / OS

W01443

### RIB WATCH CAP



Graphite - 061



Black - 016

**FEATURES**

- Logo Label on Center Front Cuff
- Shaped Crown with Darts

**FABRIC**

2X2 Rib Knit, 100% Acrylic  
 FIT / SIZE Classic Fit / OS

1120166

### CAT TRADEMARK BALACLAVA



Black - 016

**FEATURES**

- Logo Label on Right Neck
- Flatlock Seams with Reinforced Bartacks
- Hinged Shape Converts to Neck Gaiter
- Extended Contoured Neck

**FABRIC**

Jersey, 89% Polyester, 11% Spandex, 5.5oz (187GSM)  
 FIT / SIZE Classic Fit / OS

1490006



### KNIT CAP SOCK BUNDLE



Assorted - 901

#### FEATURES

- Case Pack Includes 12 Knit Cap/Sock Bundles (Each Bundle Includes 1 Knit Cap and 6 Pair of Socks)
- Actual Case Pack Assortment Shown

SIZE OS

1490005



### CAP SOCK BUNDLE



Assorted - 901

#### FEATURES

- Case Pack Includes 12 Cap/Sock Bundles (Each Bundle Includes 1 Cap and 6 Pair of Socks)
- Actual Case Pack Assortment Shown.

SIZE OS

1128012

### FLEECE NECK WARMER



Diamond Plate - 11102

#### FEATURES

- Logo Label at Center Front
- Lycra Binding at Top Opening
- Contoured Shape

#### FABRIC

Microfleece, 100% Polyester, 4.7oz (160GSM)  
FIT / SIZE Classic Fit / OS

CW91

### KNEE PAD



Yellow - 555

#### FEATURES

- EN14404 Type 2 Level 0 Protection When Used with Cat® Trousers
- Ergonomically Designed
- EVA Construction
- Lightweight and Flexible

#### FABRIC

100% EVA  
FIT / SIZE / ONE



# TOOL BOX

# FIT GUIDE

## MEN'S SIZES

TOPS	X-Small		Small		Medium		Large		XL		2XL		3XL		4XL	
NUMERIC	33	34	35	36	38	40	42	44	46	48	50	52	54	56	58	60
PANT	28 in	29 in	30 in	31 in	32 in	34 in	36 in	38 in	40 in	42 in	44 in	46 in	48 in	50 in	52 in	54 in
CHEST	33 in	34 in	35 in	36 in	38 in	40 in	42 in	44 in	46 in	48 in	50 in	52 in	54 in	56 in	58 in	60 in
WAIST	27-28 in	28-29 in	29-30 in	30-31 in	32-33 in	34-35 in	36-37 in	38-39 in	41-42 in	43-44 in	46-47 in	48-49 in	50-51 in	52-53 in	54-55 in	56-57
HIGH HIP	30 in	31 in	32 in	33 in	35 in	37	39 in	41 in	43 in	45 in	47 in	49 in	51 in	53	55.5 in	57.5 in
LOW HIP	33 in	34 in	35 in	36 in	38 in	40 in	41.5 in	43 in	44.5 in	46 in	47.5 in	49 in	51 in	53 in	55 in	57 in

## INTERNATIONAL SIZES

US	28	29	30	31	32	34	36	38	40	42	44	46
UK	28	29	30	31	32	34	36	38	40	42	44	46
F/B	38	39	40	41	42	44	46	48	50	52	54	56
IT/ES	38	39	40	41	42	44	46	48	50	52	54	56
EU	44	45	46	47	48	50	52	54	56	58	60	62
CHEST	84	86	89	91	97	102	107	112	117	122	127	132
WAIST	74	74	76	79	84	89	94	99	107	112	119	124
HIGH HIP	76	79	81	84	89	94	99	104	109	114	119	124
LOW HIP	84	86	89	91	97	102	105	109	113	117	121	124

## MEN'S FIT GUIDE

**CHEST:** Measure around your chest at the fullest point. make sure the tape stays horizontal while measuring.

**WAIST:** measure around your natural waist. find this by bending to the side - where the dip is, is your natural waist.

**LOW HIP:** measure around the fullest part of your hips when standing with your feet 6-8" apart.

**INSEAM:** Measure from the top of your leg to below the ankle bone with your feet 6-8" apart.

**\*REGULAR SIZES:** 5'8" - 6'0"

**\*TALL SIZES:** 6'1" & above

2" longer in body length

1 1/2" longer for long sleeves

3/4" longer for short sleeves



# WORKWEAR

## GLOBAL

2025

SRI APPAREL LIMITED

A GLOBAL APPAREL AND ACCESSORY LICENSEE OF CATERPILLAR INC.

---

Suite 10, Block D The  
Cubes  
Beacon South Quarter  
Sandyford  
Dublin 18

---

IMPORTER. : **ORBICO SP. Z O.O** ul.Salsy 2  
02-823 Warszawa ; POLAND



©2024 Caterpillar. All Rights Reserved. CAT, CATERPILLAR LET'S DO THE WORK, their respective logos, "Caterpillar Corporate Yellow", the "Power Edge" and Cat "Modern Hex" trade dress as well as corporate and product identity used herein, are trademarks of Caterpillar and may not be used without permission. Summit Resource International, an authorized distributor of SRI Apparel, a global apparel and accessory licensee of Caterpillar Inc.

  @CATWORKWEAR